

FOR SALE  
Falcon Ridge Golf Club - Lenaxa, Kansas



\$2.2 Million Asking Price



# FALCON RIDGE GOLF CLUB



Text





# FALCON RIDGE GOLF CLUB

- **Falcon Ridge Golf Club**
- 20200 Prairie Star Pkwy, Lenexa, Kansas
- [www.falconridgegolf.com](http://www.falconridgegolf.com)
- Architect - Craig Schreiner
- 6,820 yards
- Slope of 130
- Opened 1991
- Clubhouse - 4,760 square feet on two levels





# FALCON RIDGE GOLF CLUB

- 203 acres
- Irrigation water from 3 on course ponds fed by stream. 100 acre feet of capacity.
- Continuous 8 foot asphalt cart paths
- Crenshaw bent grass greens. Tees and fairways are Zoysia
- 60 person banquet capacity
- Electric cart storage in basement of clubhouse
- 250 yard range with 25+ tee stations
- Full Service Clubhouse including; bar, restaurant, rest rooms and pro shop. Clubhouse was built in 1997.
- Full Maintenance Equipment list upon request





# FALCON RIDGE GOLF CLUB



## Acquisition Opportunity

Falcon Ridge Golf Club is nationally recognized as one of the best public golf courses in the Midwest. Located in the southwest suburbs of Kansas City, Falcon Ridge is set among the rolling hills of western Lenexa. Perfectly manicured zoysia tees and fairways lead golfers to some of the best bent grass greens in Kansas City. With beautiful views and unmatched customer service, Falcon Ridge Golf Club offers an unforgettable golf experience for every occasion. Priced to sell at \$2.2 million, Falcon Ridge is a tremendous opportunity for an existing golf course owner or a first time owner looking for a chance to break into the golf business.

- Highly regarded daily fee golf course
- Excellent demographics in local area
- Full service clubhouse with growth opportunities for golf and food & beverage
- Club needs new owner with aggressive marketing campaign to increase rounds and revenue
- Club has positive cash flow





HOLE	Rating/Slope	1	2	3	4	5	6	7	8	9	OUT
Black	72.8/130	375	419	370	486	172	499	186	513	415	3435
Blue	70.6/126	338	383	348	450	151	477	161	500	387	3195
White	69.2/123	328	346	338	417	132	464	146	490	371	3032
Handicap		13	7	11	1	17	5	15	3	9	
Par		4	4	4	4	3	5	3	5	4	36
Red	69.6/119	270	287	279	384	97	396	99	441	331	2584

Scorer: \_\_\_\_\_




**USGA RULES GOVERN PLAY**

- Fairway Yardage Markers: White Pole - 150 yards to center of the green.
- Out of Bounds: White stakes.
- Water Hazards: Yellow stakes or lines.
- Lateral Hazards: Red stakes or lines.

We Ask For Your Cooperation:  
Repair ball marks, rake bunkers and maintain a 4:10 hour pace.

Dean Lytton - General Manager  
Stewart Koch - Head Golf Professional  
Paul Genderson - Superintendent

20200 Prairie Star Parkway  
Lenexa, Kansas 66220  
913-393-GOLF  
www.falconridgegolf.com

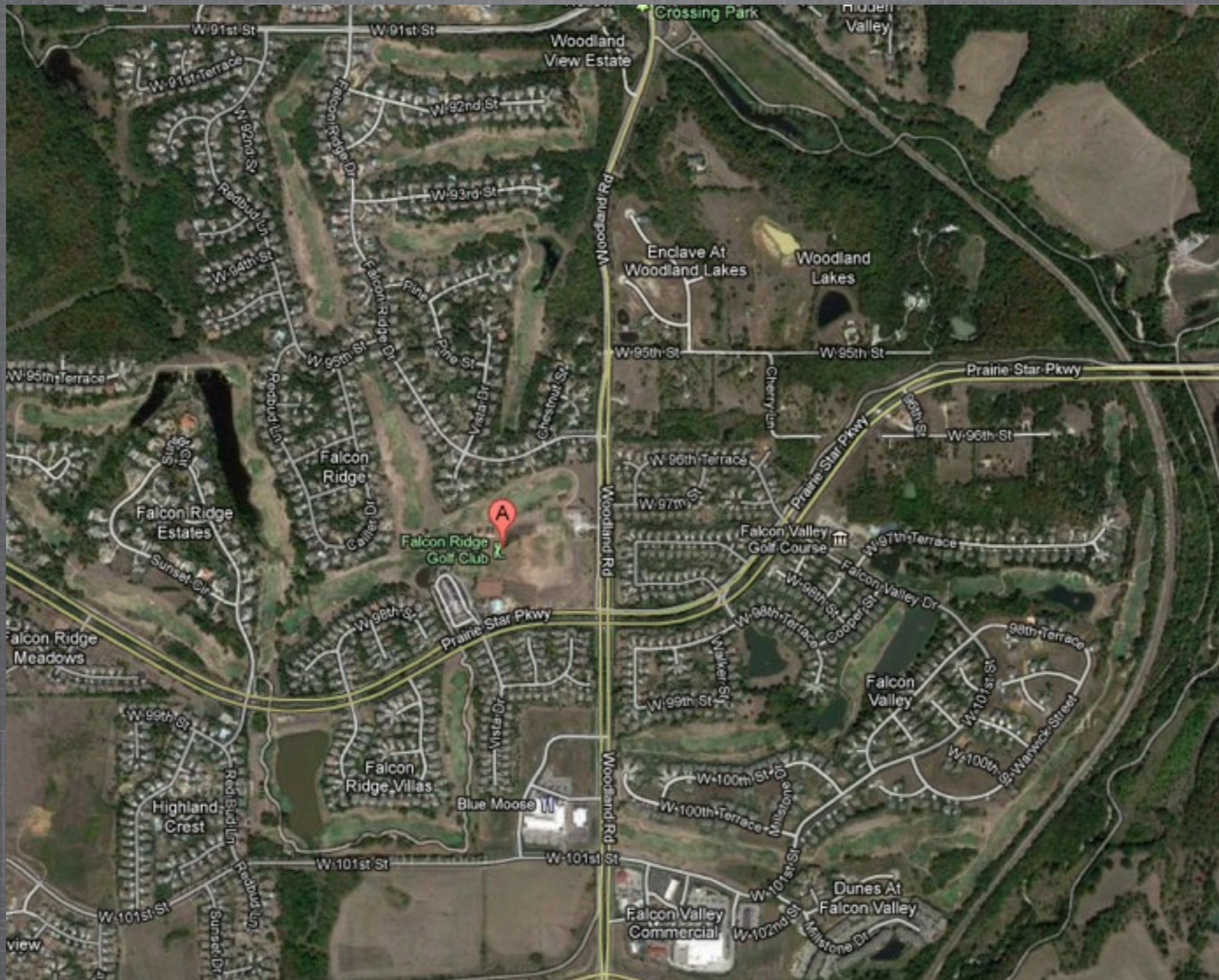


10	11	12	13	14	15	16	17	18	IN	TOT	HCP	NET
417	568	169	436	187	529	161	517	401	3385	6820		
364	548	137	409	153	499	153	488	373	3134	6329		
354	532	128	391	134	487	141	477	354	2998	6030		
10	4	16	2	14	6	18	8	12				
4	5	3	4	3	5	3	5	4	36	72		
303	496	88	291	112	448	104	428	306	2576	5160		

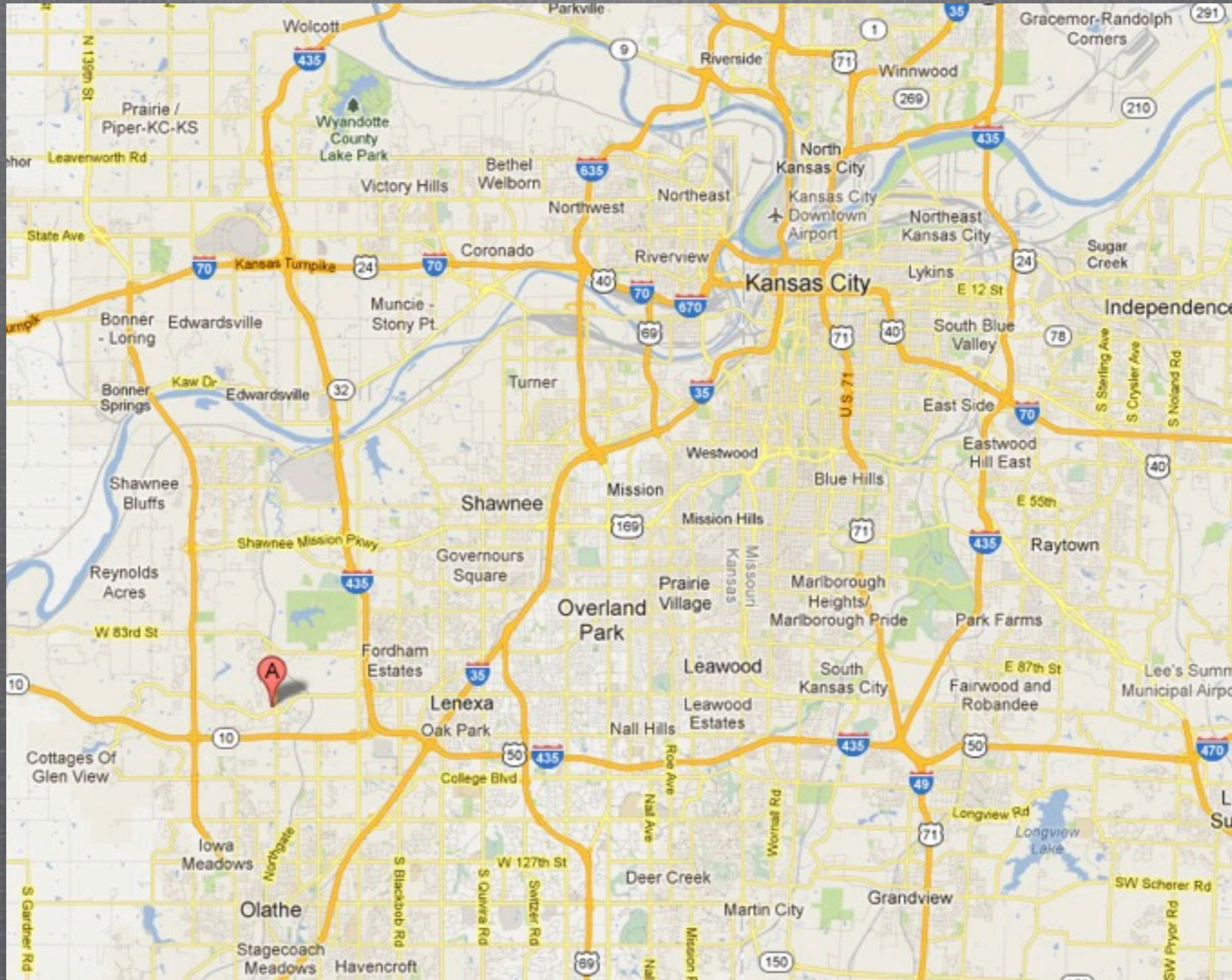
Attest: \_\_\_\_\_ Date: \_\_\_\_\_













For Additional information, please contact

**Chris Charnas**

**Links Capital Advisors, Inc.**

*office 847-866-7192*

*cell 312-543-7192*

[chris@linkscapitaladvisors.com](mailto:chris@linkscapitaladvisors.com)

[www.linkscapitaladvisors.com](http://www.linkscapitaladvisors.com)

